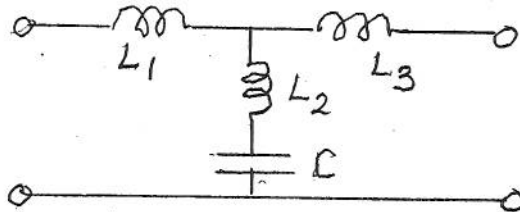


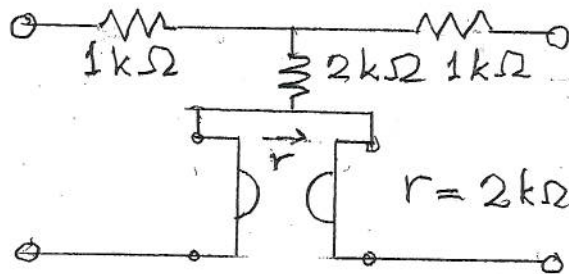
FINAL EXAMINATION  
Dec.6, 2007, 9:30 - 11:20 am

ECE 580  
Prof. Gabor C. Temes

1. For the two-port shown,  $y_{11} = y_{22} = \frac{7s^2 + 1}{16s^3 + 4s}$ . Find the element values.



2. Find the open-circuit impedance parameters of the two-port shown below.



3. Find the input impedance and the output (Thevenin) impedance of the linear Gm-C section shown.

